

Patient Information on Preventing a Pressure Injury



Concept
Fertility
Centre

12.1.39

A pressure injury is a localized injury to the skin and / or underlying tissue usually over a bony prominence, as a result of pressure, shear and / or friction or a combination of these factors.

You are at increased risk of developing a pressure injury while in hospital if you have decreased mobility and activity and / or decreased sensory perception (decreased feeling in an area of your skin), as these all reduce your ability to change your body position in order to reduce the pressure over a particular area. Other factors include your age, nutrition, pre-existing illness and skin characteristics.

Most of Concepts clients are not at any increased risk of sustaining a pressure injury while attending our hospital due to our patients generally being healthy, mobile, less than 65 years of age and spend less than 24 hours as an in-patient in our hospital.

On admission to Concept Day hospital your risk of developing a pressure injury will be determined and a plan organised if necessary, to prevent this during your stay.

Contact Us

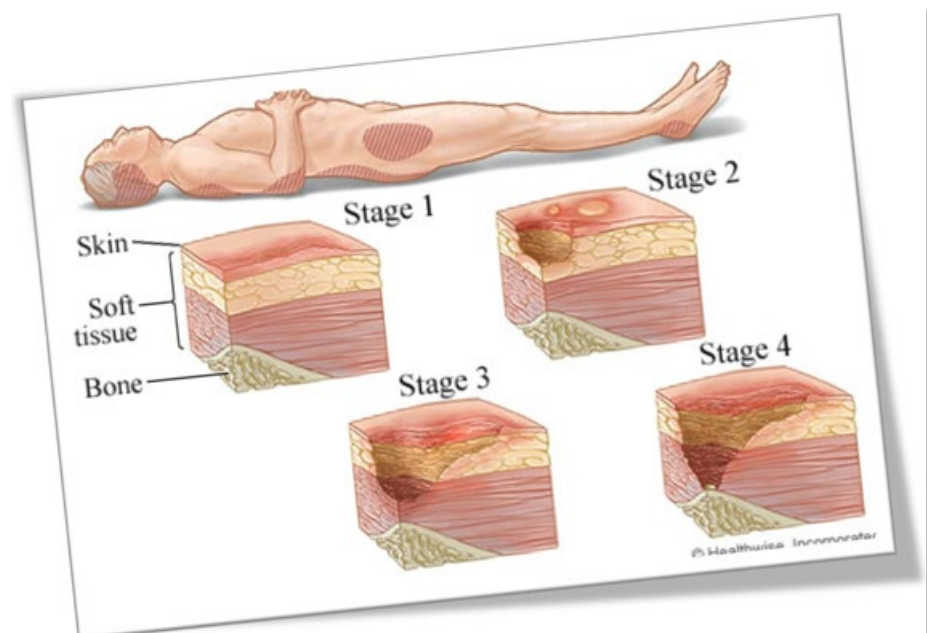
218 Nicholson Road
Subiaco WA 6008

Telephone: (08) 9382 2388

Facsimile: (08) 9381 3603

concept@conceptfertility.com.au

www.conceptfertility.com.au



Version 3

Developed: November 2013
Last Review: March 2020
Next Review: March 2024

Reviewed by Theatre Manager
Authorised by DON

Page 1 of 1